

FULLY CONDITIONED INDUSTRIAL/WAREHOUSE
SPACE FOR SUBLEASE

Evergreen Business Park

7315 NE Evergreen Parkway, Suite 300, Hillsboro, OR 97124
Building G



Key Features



12,512 sq. ft. shell
1,043 sq. ft. office



6 dock doors

includes 1 oversized and 2 edge of dock
levelers

4 grade doors

22' clear height

Fully conditioned space throughout

LED on motion sensor lighting

Located in the desirable Hillsboro
submarket nearby Intel, Oracle,
and Amazon

Less than a mile to US-26
Interchange and within 2 miles of
a variety of amenities including
Orenco Station

Master lease expires 7/31/2028

Lease Rate (NNN):

\$0.95/sq. ft. shell

\$1.10/sq. ft. office

Jake Bigby

jakeb@pactrust.com

Caitlin Knecht

caitlink@pactrust.com

503.624.6300

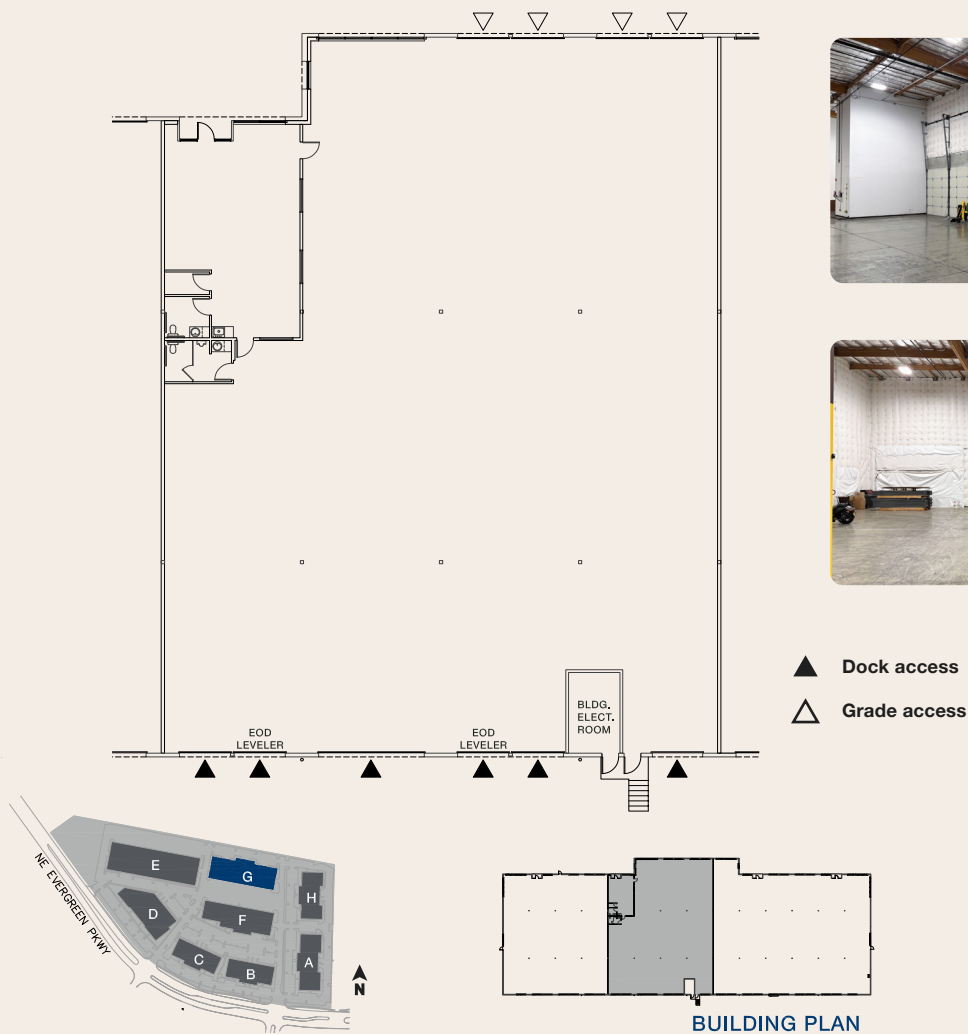
Owned & Managed by

PACTRUST

Space Plan

7315 NE Evergreen Parkway, Suite 300, Hillsboro, OR 97124

12,512 Sq. Ft.



Jake Bigby
jakeb@pactrust.com

Caitlin Knecht
caitlink@pactrust.com

503.624.6300
www.PacTrust.com